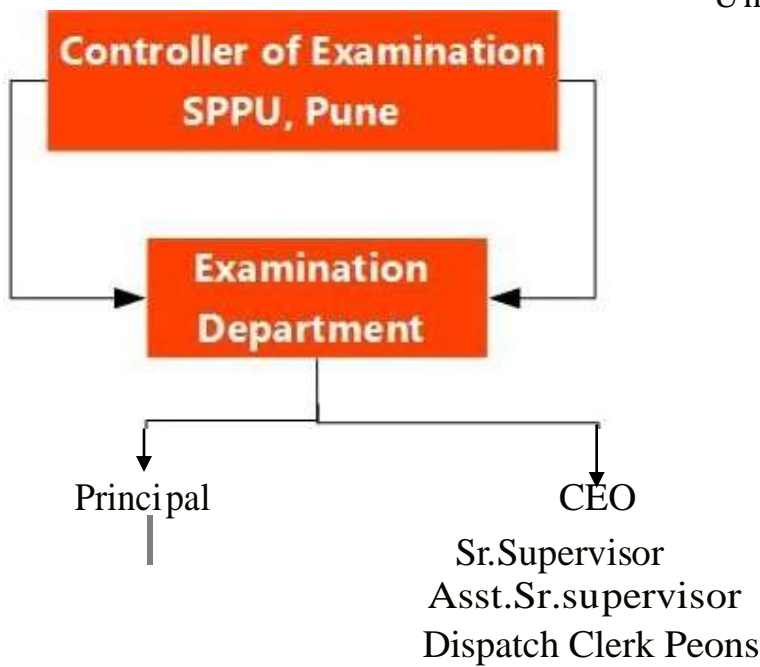


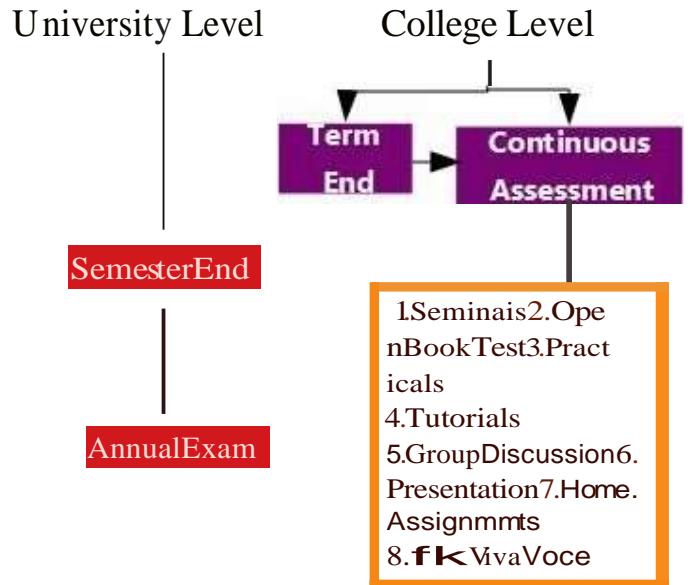
SSK ARTS & COMMERCE COLLEGE

Evaluation Methods & Execution

Examination Execution



Evaluation Methods



- 1.Seminars
2. Open Book Test
3. Practicals
4. Tutorials
5. Group Discussion
6. Presentation
7. Home Assignments
8. Viva Voce

- *Facilities:-**
1. Examination Sub-centre of Savitribai Phule Pune University
 2. Continuous Evaluation through Internal Exams
 3. Barcode, QR code System for Evaluation of Papers
 4. Photocopy of Answer paper is provided as per demand

Class	Pattern	Details
F.Y.B.A./ F.Y.B.Com.	CBCS 70-30	CAP- College Level
SYBA & SYB.Com	CBCS 70-30	CAP- SPPU Level
TYBA & TYB.Com	Annual 80-20	CAP- SPPU Level